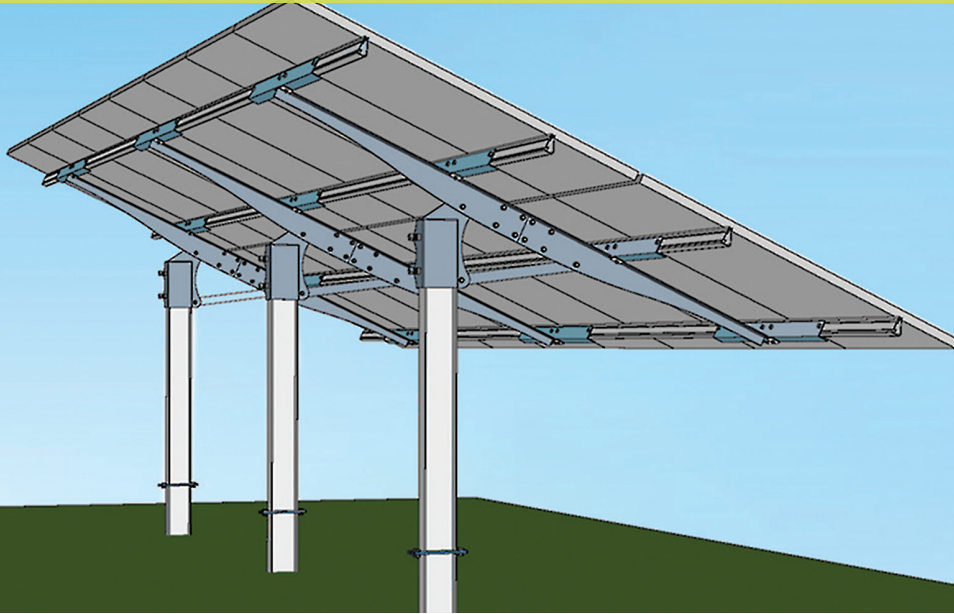


# GROUND MOUNTS

COST EFFECTIVE, QUICK INSTALLATIONS



**DRIVEN POSTS**



**RESIDENTIAL PROJECTS**



**CONCRETE EMBEDDED POSTS**



**COMMERCIAL PROJECTS**

MT Solar designs and manufactures mounting structures for solar modules and arrays of all sizes. We are dedicated to making the best Pole and Ground Mounts on the market. Our products ultimately promote speed and safety, improving your project's bottom line.



## GROUND MOUNT FEATURES

### COST EFFECTIVE

Our most economical solution for any size array. Configuration is 2 high in Portrait.

### FAST INSTALLATIONS

Simple assembly, designed with the solar installer in mind. Only two socket sizes are required for the entire installation. User friendly manuals make it a breeze.

### COMPLETE PACKAGE

Everything you need is supplied in a single package – posts, frames, rails, module clamps. No need to procure additional material unless you prefer to source steel posts locally.

### CLEANER APPEARANCE

Simple post design allows for a cleaner look and easier maintenance under the array. Less posts means less ground penetrations.

### TILT OPTIONS

Fixed tilt options from 20-45°.

### FOUNDATION OPTIONS

We can provide stamped drawings/ calculations for concrete embedded posts, concrete drilled piers, ballast blocks, driven posts, steel base plates, anchor rods, and helical piers.

### DEALER / INSTALLER EDUCATION

Webinars and sales support available on request.

### CUSTOMER SUPPORT

From purchase to installation, our products are guaranteed. Our team is standing by, ready to assist with any questions you have.

### PRODUCT WARRANTY

10 years

### MADE IN USA

Montana is not only the namesake of our company, it's where we build your mounts.



# GROUND MOUNT



## COMPLETE PACKAGE DELIVERED

Everything you need to install the ground mount comes delivered on a neatly packed pallet - posts, frames, rails, and clamps. All hardware is organized in a job site bucket.

Making life easier for the solar installer has always been one of our main driving forces.

