



### GENERAL NOTES

1. CONTRACTOR SHALL NOTIFY ENGINEER OF ANY DISCREPANCIES, OMISSIONS, OR CONFLICTS BETWEEN THE VARIOUS ELEMENTS OF THE WORKING DRAWINGS PRIOR TO PROCEEDING WITH ANY WORK INVOLVED.
2. IN ALL CASES, U.N.O., THE MOST STRINGENT REQUIREMENTS SHALL GOVERN AND BE PERFORMED.
3. DO NOT SCALE DRAWINGS.
4. ANY SPECIAL INSPECTION REQUIRED BY THE BUILDING OFFICIAL OR THE BUILDING CODE(S) IS THE RESPONSIBILITY OF THE CONTRACTOR.

### GENERAL STEEL NOTES

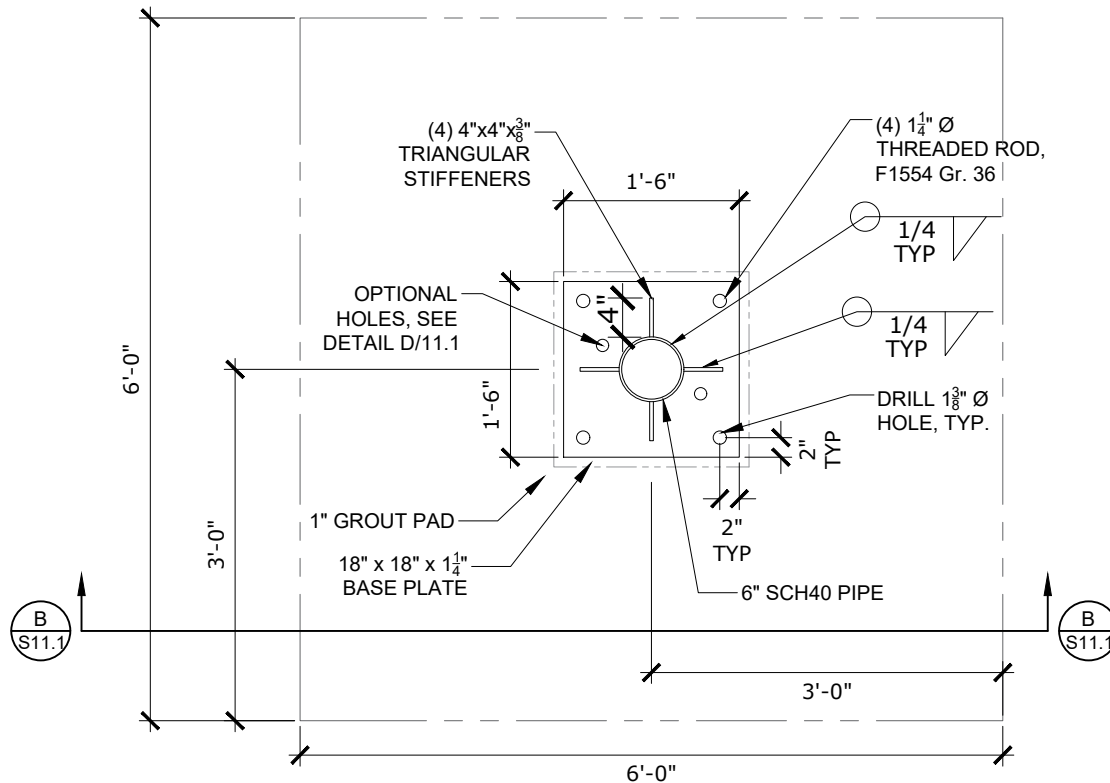
1. COLUMN: SCH40 PIPE
2. BASE PLATE ASTM A36,  $F_y = 36\text{ksi}$ .
3. RECOMMENDED THAT ALL STEEL BE GALVANIZED, ZINC-COATED, OR OTHERWISE PROTECTED FROM ENVIRONMENTAL EXPOSURE AND CORROSION.

### FOOTING NOTES

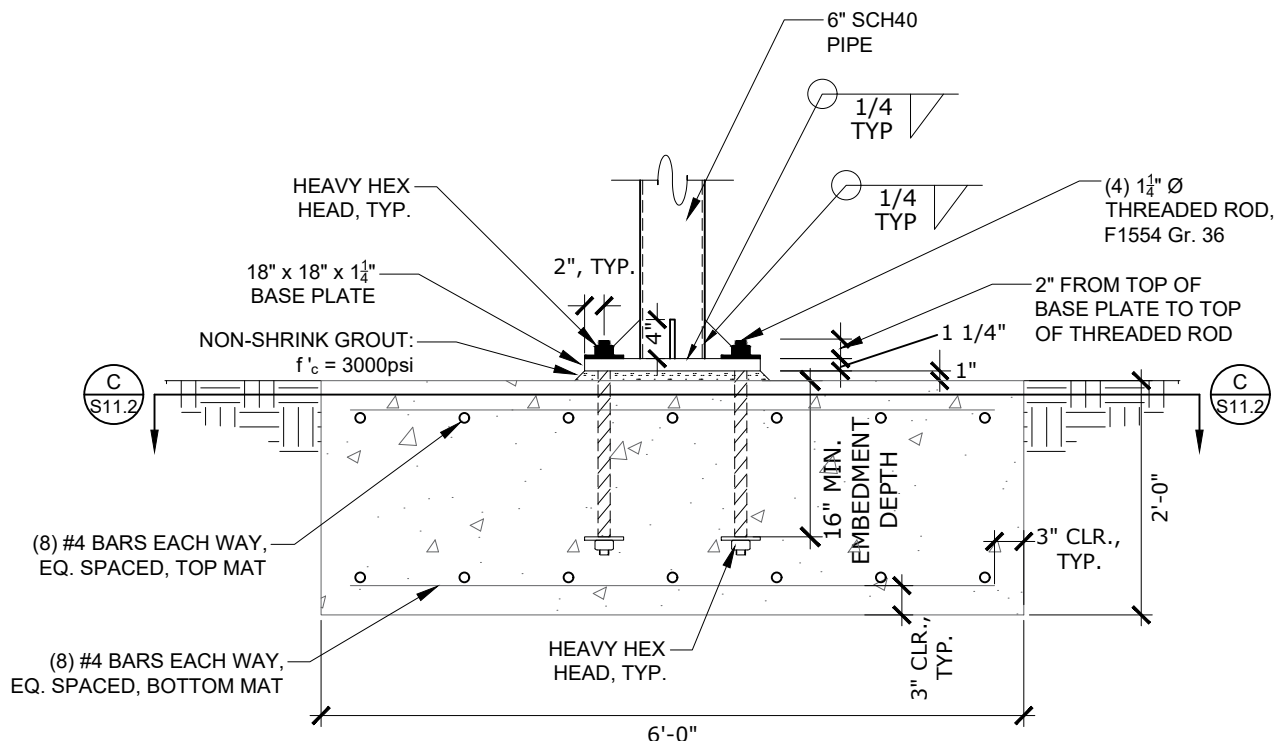
1. ALL FOOTINGS SHALL BE PLACED ON UNDISTURBED EARTH FREE FROM ORGANIC MATERIALS.
2. CONCRETE:  $f'_c = 2,500\text{ PSI}$   
REINFORCING STEEL: ASTM A-615 GRADE 60
3. FOOTING REINFORCING STEEL SHALL HAVE MINIMUM CONCRETE COVER OF 3".
4. ANCHORS SHALL BE CAST-IN-PLACE. POST-INSTALLED ANCHORS ARE NOT ACCEPTABLE. RECOMMENDED TO USE TEMPLATE TO PLACE ANCHORS.
5. CONCRETE WORK SHALL COMPLY WITH AMERICAN CONCRETE INSTITUTE (ACI) CURRENT EDITIONS OF:  
ACI 301: SPECIFICATIONS FOR STRUCTURAL CONCRETE FOR BUILDINGS  
ACI 318: BUILDING CODE REQUIREMENTS FOR REINFORCED CONCRETE  
ACI 347: RECOMMENDED PRACTICE FOR CONCRETE FORM WORK
6. MATERIALS:
  - A. CEMENT SHALL CONFORM TO ASTM C150, TYPE II, PORTLAND CEMENT
  - B. HARD ROCK AGGREGATES SHALL CONFORM TO ASTM C33. LIGHTWEIGHT AGGREGATES SHALL CONFORM TO ASTM C330.
  - C. WATER SHALL BE POTABLE.
  - D. AIR ENTRAINMENT SHALL CONFORM TO ASTM C260.
  - E. FLY ASH SHALL CONFORM TO ASTM C618.
  - F. CALCIUM CHLORIDE SHALL NOT BE USED.

### STEEL REINFORCING NOTES

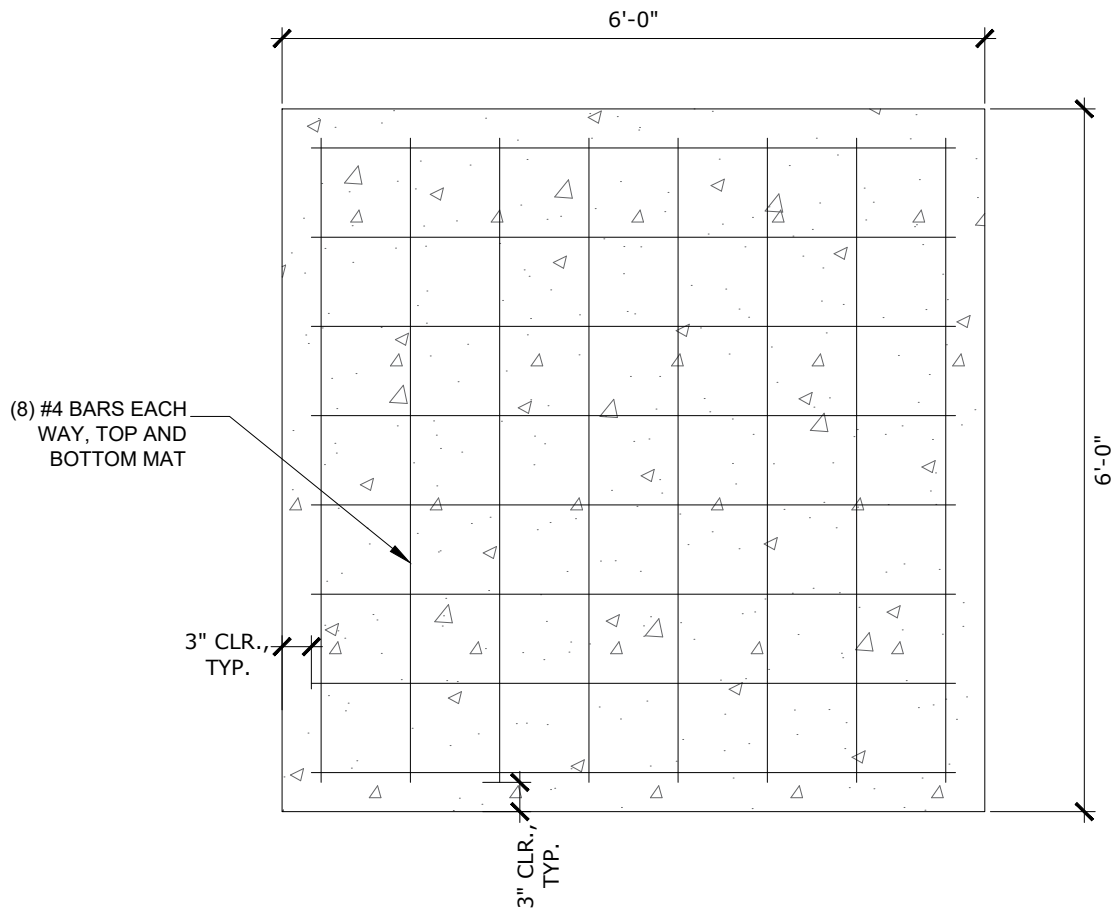
1. ALL METAL REINFORCEMENT SHALL BE DEFORMED TYPE BARS (EXCEPT #2 BARS) AND SHALL CONFORM TO THE REQUIREMENTS OF THE "STANDARD SPECIFICATIONS ASTM A615, GRADE 60."
2. ALL REINFORCEMENT SHALL BE DETAILED AND PLACED IN ACCORDANCE WITH THE LATEST EDITION OF ACI DETAILING MANUAL 315 AND ACI STANDARD 318.
3. REINFORCEMENT SHALL BE FREE FROM MUD, OIL, OR OTHER NON-METALLIC COATINGS THAT ADVERSELY AFFECT BONDING CAPACITY.



**BASE PLATE AND FOOTING PLAN**

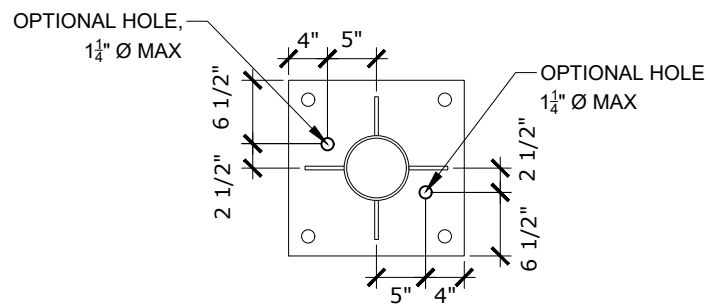


**BASE PLATE AND FOOTING SECTION**



C  
S11.2

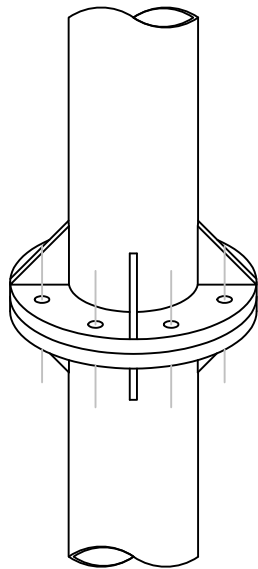
**FOOTING SECTION**



NOTE:  
MAXIMUM OF 2 OPTIONAL HOLES ALLOWED. IF 2 HOLES ARE PRESENT,  
HOLES MUST BE ON OPPOSING SIDES DIAGONALLY FROM EACH OTHER.  
HOLES MAY BE USED FOR GROUT PLACEMENT OR CONDUIT.

D  
S11.2

**OPTIONAL BASEPLATE HOLES**



**GUSSET CONNECTION  
ISOMETRIC VIEW**

